



Approximate weight:	73 kg
Casing oil capacity:	1,5 lit
Casing pressure:	10 bar
	15 bar peak

Motor GM1

+Gearbox R13

	GM1	220	
Displacement	cm3/rev	221	
Piston Ø	mm	42	
Shaft stroke	mm	32	
Specific torque	Nm/bar	3.80	
	lb.ft/psi	0.18	
Pressure rating	bar	250	
Peak pressure	bar	300	
Cont. speed	rpm	550	
Max. speed	rpm	700	
Peak power	kW	48	

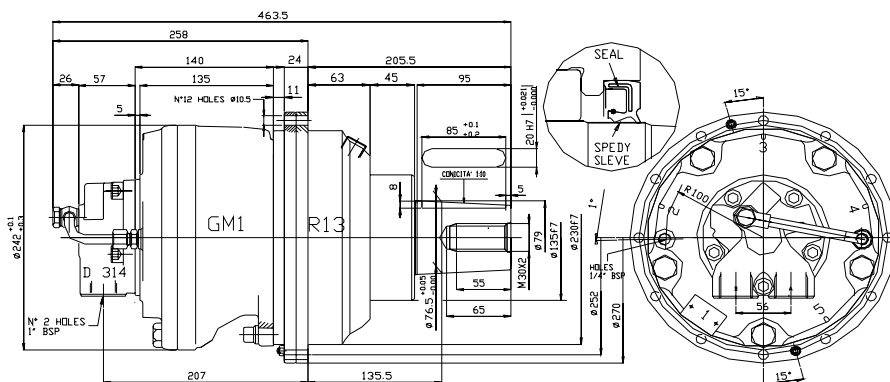
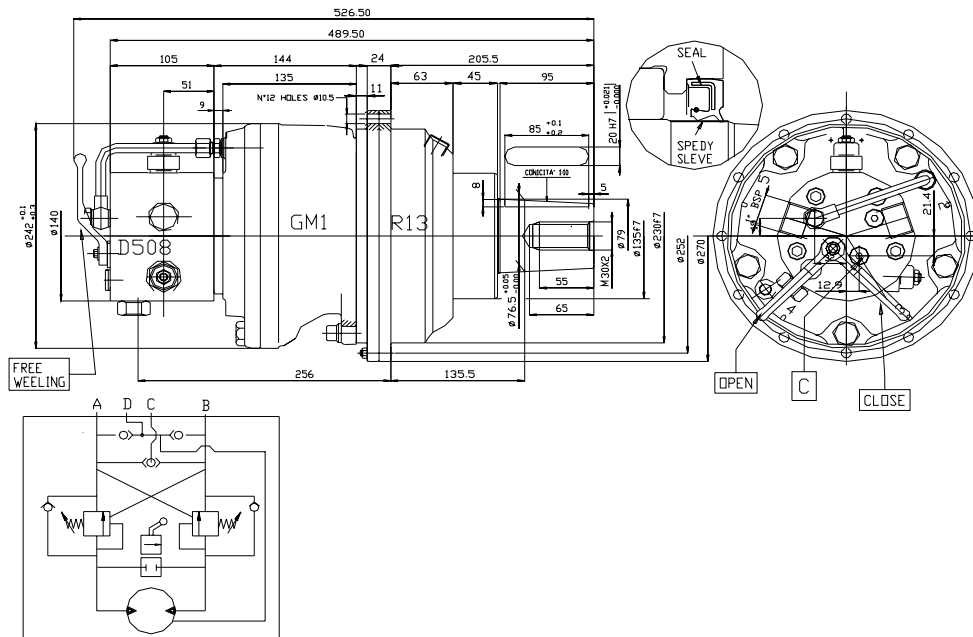
reduction ratio 1:7
 max acceptable
 radial load 7 ton on
 the shaft

CODES: GM1 220 9HA D314 DM2 0051080011 R13 0213110900

**GEARBOX ORDERING -
 ORDINAZIONE**



- GearboxRiduttore
- R13 Ratio 1:7
- O With gearbox breather valve for separate motor casing and gearbox (and brake) oil
 Con valvola di sfiato per motore e riduttore (e freno) con olio separato
- U Shared motor casing and gearbox (and brake) oil
 Motore e riduttore (e freno) con olio unico
- 0,1,2 Motor size (0 - for GM05, 1 - for GM1, - for GM2,)
 Tipo motore (0 - per GM05, 1 - per GM1 - per GM2)
- X special taper shaft



MOTOR ORDERING CODE

1. **Nominal displacement** - see motor spec. table.
2. **Shaft option:** 9 = female 35-2-16 DIN 5480
3. **Bearings:** H = roller bearings
4. **Other options:** U = without shaft seal
M = special seals in the cylinders

DISTRIBUTOR CODE

5. **Distributor:** available D314 or D508 with valve block inserted

ASSEMBLY CODES

7. **Direction of shaft rotation:**
R = clockwise rotation
L = anti-clockwise rotation
8. **Distributor cover position:**
no code = position DM1
DM . , = other position